



Spedal NaviCam User Manual

Smart Car Stereo

CL860/CL860L

1. Safety Guidelines

1.1 Warnings

- Do not operate this product while driving.
- Do not install or operate this product with wet hands.
- Do not install this product in a place with high temperature, humidity, flammable, explosive gas or liquid.
- Do not install this product in an area that interferes with the driver's sight or driving safety.
- Do not install this product on the airbag cover or within the working range of the airbag.
- Do not leave this product in a closed vehicle with high temperature for a long time.
- Do not operate this product over rated voltage.
- Do not use non-original cables and accessories.
- Do not use sharp objects such as awls or scissors to cut this product and its accessories.
- Do not disassemble, repair or modify this product and accessories by yourself.
- Do not install, use or place this product within the reach of children under 16 years of age.

1.2 Precautions

- Do not press the lens too hard to avoid damage or dislocation of the lens.
- Do not directly touch the lens surface, so as not to affect the recording effect.
- Do not remove the memory card during the shutdown process to avoid file damage.
- When using the memory card for the first time, please format it on this product to ensure stable reading and writing.
- When not using the product for a long time, please pull out the memory card to ensure the performance of the memory card.

Scan the QR code, select the corresponding model, and view the User Manual.

<https://spedal.cc/html/support/download/navicam.html>

For any questions please contact support@spedaltech.com



2. User Guide

2.1 Package List

◆ Device



◆ Power Cable



◆ Audio Cable



◆ Suction Bracket (Optional)



◆ Camera (Optional)



◆ Camera (Optional)



◆ Camera Cable (Optional)



◆ Quick Guide



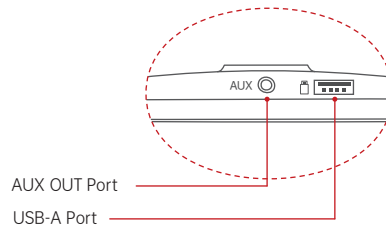
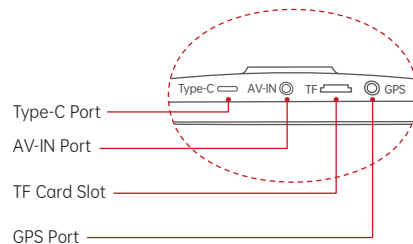
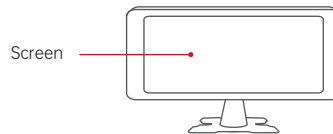
◆ TF Card (Optional)



Note

Do not use cables and components that are not original. Gifts and accessories are not covered under warranty. The package contents of this product may change without prior notice, and the actual contents of the package shall prevail.

2.2 Product Introduction

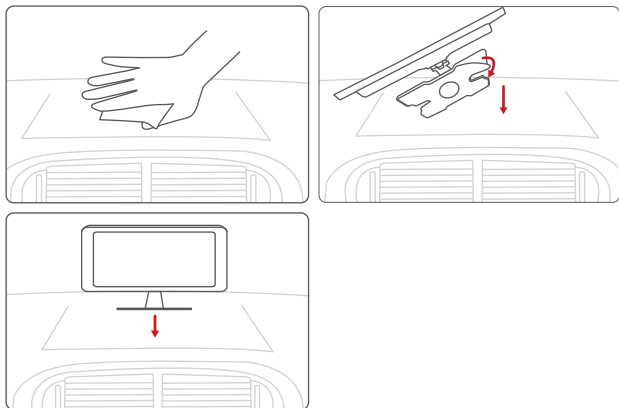


2.3 Device bracket installation

1. Thoroughly clean and dry the surface of the car dashboard, removing any dust or debris and ensuring a smooth surface.
2. Peel off the protective film from the bottom adhesive of the device bracket.
3. Stick the device onto the appropriate position on the dashboard.
4. Press down on the bottom bracket of the device to ensure a secure adhesive bond.
5. Adjust the device screen to the desired angle.

Note

The installation position of equipment should not block the driver's sight and affect driving safety.

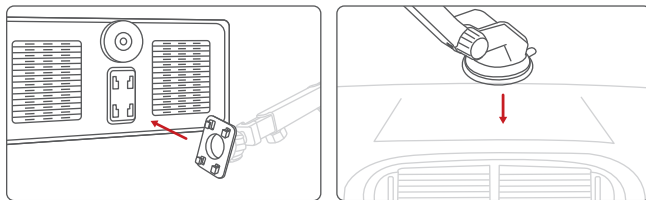


2.4 Suction Bracket Installation(Optional)

1. Align the suction bracket clips with the holes on the back of the device and push them up to secure the bracket.
2. Thoroughly clean and dry the car dashboard surface, remove dust or debris, and make sure the surface is flat.
3. Remove the 3M adhesive release paper from the dashboard pad mounting disk and adhere it to a clean instrument panel surface.
4. Allow to sit for 3 hours or more to ensure a strong bond. Then remove the protective film from the dashboard pad.
5. Tear off the protective film from the suction bracket, place the suction cups firmly in the center of the dashboard pad mounting disk, and press the lock button.
6. Adjust the angle of the device screen.

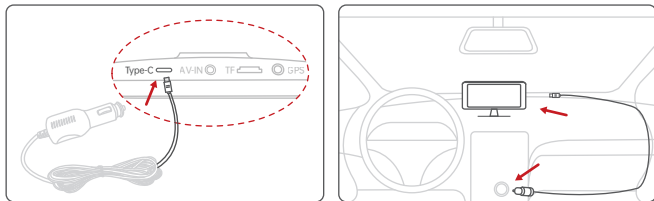
Note

The installation position of equipment and brackets should not block the driver's sight and affect driving safety.



2.5 Device Installation

Insert the power cable into the car cigarette lighter, and connect the other end to the power interface of the device.

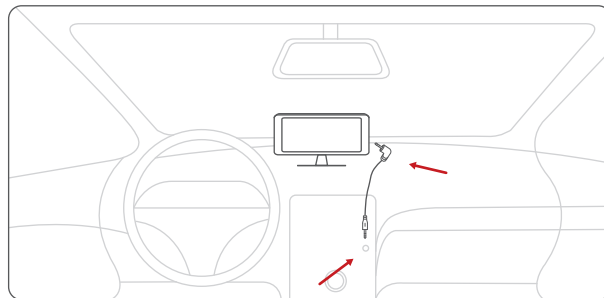


Note

Depending on the vehicle, the cigarette lighter socket may be located in a different position. The figure provided is for reference only.

2.6 Audio Cable Installation

1. Insert the audio cable into the car AUX port, and connect the other end to the AUX OUT port of the device.
2. Set the car's audio input mode to AUX audio input. After the connection is successful, you can play music, navigation, calls and more through your car's audio system.

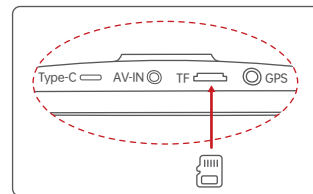


Note

Please confirm if your car supports AUX IN and note that the location of the AUX may vary depending on the car model. Please consult your manufacturer for more details.

2.7 TF Card Installation(Optional)

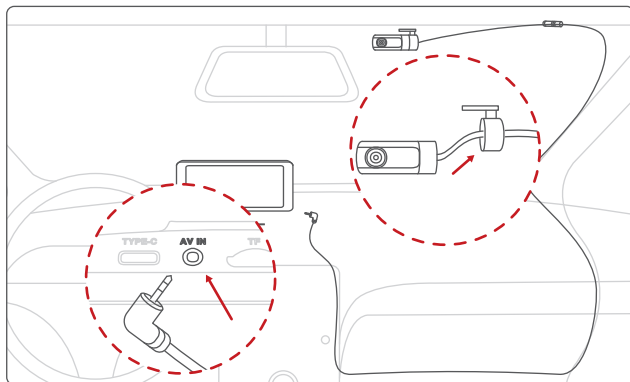
- Insert the TF card into the TF card slot.
- The self-provided TF card should meet the following requirements: Class 10 or above, the capacity does not exceed 128GB.



2.8 Camera Installation(Optional)

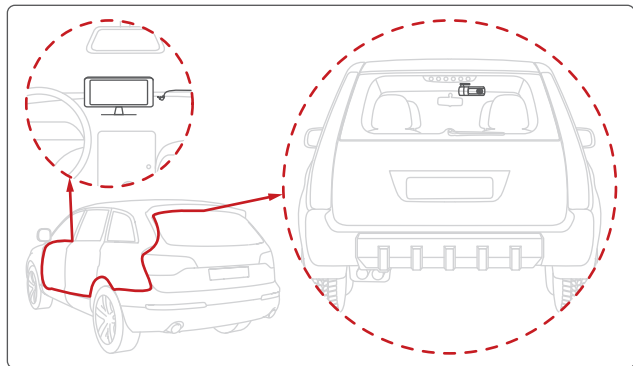
2.8.1 Windshield(Optional)

1. Thread the camera's wire through the hole on the adhesive bracket, and secure the camera tightly to the bracket.
2. Peel off the protective film from the adhesive bracket, and attach the bracket to the vehicle's front windshield. Press firmly to ensure it adheres securely.
3. Use the camera extension cable to connect the camera to the device.
4. Adjust the angle of the lens.



2.8.2 Inside Rear Windshield(Optional)

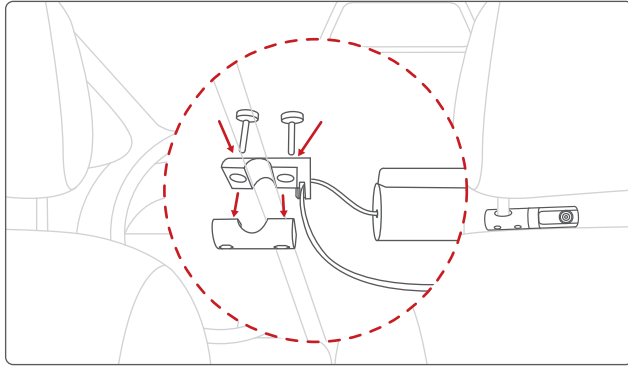
1. Thread the camera's wire through the hole on the adhesive bracket, and following the direction of the arrow, tighten and rotate the bracket with the camera, ensuring they are securely fastened together.
2. Peel off the protective film from the adhesive bracket, and attach the bracket to the vehicle's rear windshield. Press firmly to ensure it adheres securely.
3. Use the camera extension cable to connect the camera to the device.
4. Adjust the angle of the lens.



2.8.3 Headrest Support Rod(Optional)

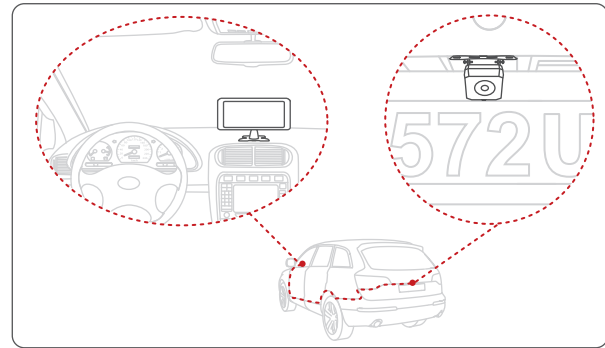
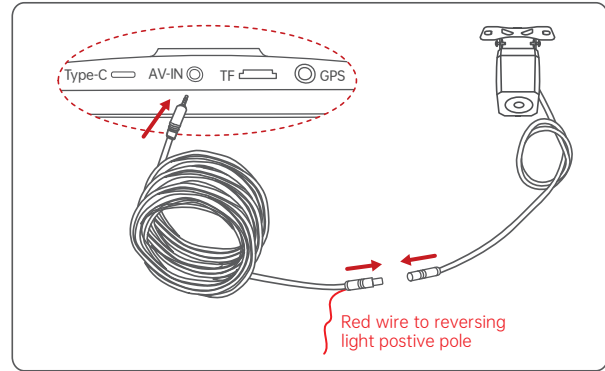
1. Thread the camera's wire through the two wire holes on the support pole bracket.

2. Following the direction of the arrow, tighten and rotate the bracket with the camera, ensuring they are securely fastened together.
3. Attach the bracket to the headrest support pole.
4. Secure the bracket using the screws provided in the accessories.
5. Use the camera extension cable to connect the camera to the device.
6. Adjust the angle of the lens.



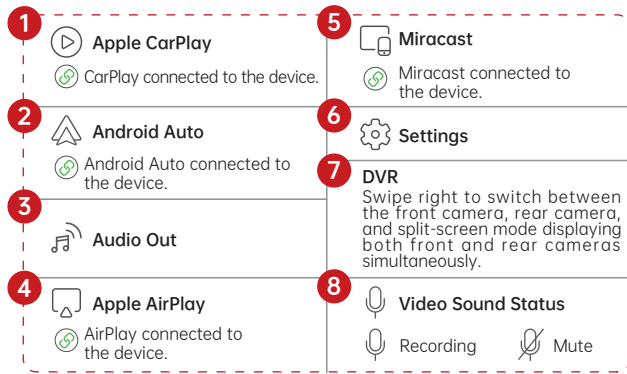
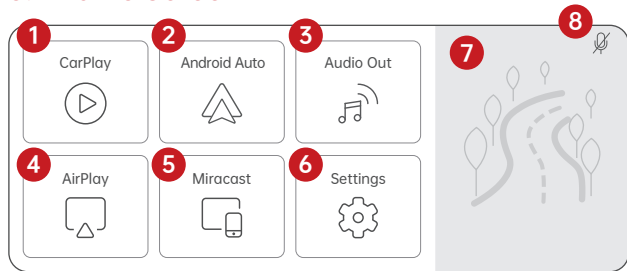
2.8.4 Rear Camera(Optional)

1. Connect the rear camera to the Rear camera cable, and insert the other end into the rear camera port (AV-IN) of the device;
2. Use the rear camera bracket to fix the rear camera above the license plate;
3. Please tear off the rear camera lens protective film before use;
4. Please adjust the lens to a suitable angle.Tighten the screws.



3. Features And Settings

3.1 Home Screen



3.2 Apple CarPlay

3.2.1 Apple CarPlay Wireless Connection

Note

The iPhone version that supports wireless CarPlay requires the following:

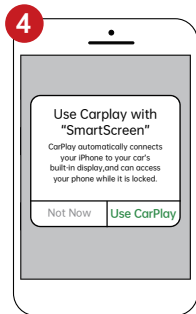
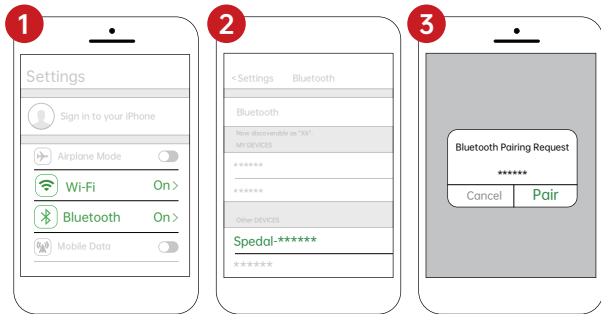
- iPhone is running iOS 9 or higher. (such as iPhone XR and above; iPhone 11 and above; iPhone SE (second generation) and above, etc.)
- It also requires the CarPlay system and the iPhone's voice system to be turned on. Please check if Siri is enabled.
- When using wireless CarPlay for the first time, the connection time may take around 30 seconds, please be patient.

For more details visit:

<http://www.apple.com/ios/carplay>

Click "▶" on the home screen to enter the CarPlay.

1. Go to Settings on your iPhone, turn on "Bluetooth" and "Wi-Fi"
2. Enter the "Bluetooth" menu and select the Bluetooth device starting with "Spedal-*****" from the list of "Other DEVICES" Bluetooth devices.
3. Wait for about 20-30 seconds, and a prompt "Bluetooth Pairing Request" will pop up on your phone. Select "Pair" to successfully pair your phone with the device.
4. Then, a prompt "Use CarPlay with "SmartScreen"?" will pop up on your phone. Select "Use Carplay".
5. Please wait for a moment and you will enter the CarPlay mode.




Note

1. Different versions of iOS may display differently, please refer to the actual situation.
2. The first connection may take a longer time, please be patient.
3. If you want to switch to Android Auto or AirPlay, you need to turn off Bluetooth and Wi-Fi on your phone to disconnect the Apple CarPlay connection mode.


3.2.2 Apple CarPlay Audio Out

Click "🎵" on the home screen to enter the Audio Out.

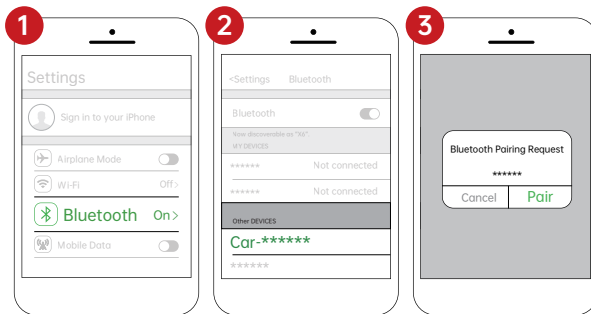
1. Native Audio

 The sound is played from the speaker of the device.

2. Bluetooth

 In CarPlay/Android Auto mode, the phone is directly connected to the car's Bluetooth (if the phone has been paired with the car's Bluetooth before, there is no need to repeat the connection operation).

1. 2.1 Go to Settings on your iPhone > Bluetooth, turn on the "Bluetooth".
2. 2.2 In the "Other Devices" Bluetooth device list, select the Bluetooth name of your car.
3. 2.3 A prompt will pop up on the phone, choose "Pair", and the phone will pair successfully with the car's Bluetooth.

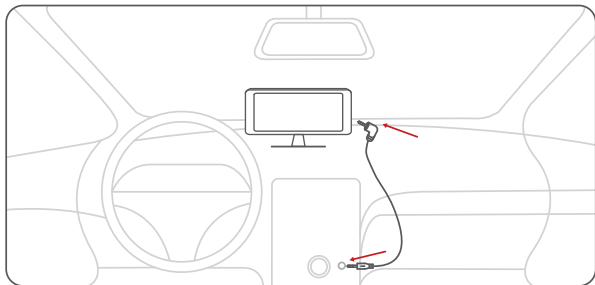


3. AUX Connection



Connect to the car through an AUX cable, and the sound will play from the car's speakers.

- 3.1 Insert the audio cable into the car AUX port, and connect the other end to the AUX OUT port of the device.
- 3.2 Set the car's audio input mode to AUX audio input. After the connection is successful, you can play music, navigation, calls and more through your car's audio system.



Note

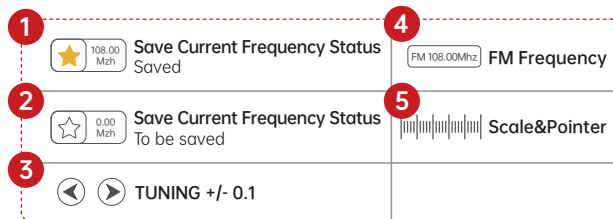
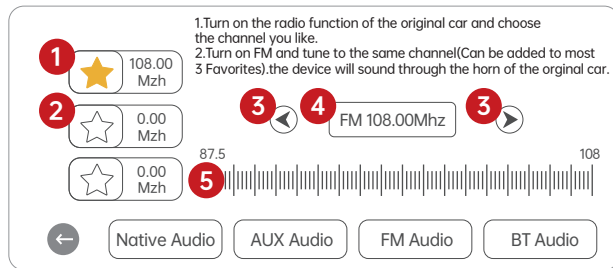
Please confirm if your car supports AUX IN and note that the location of the AUX may vary depending on the car model. Please consult your manufacturer for more details.

4. FM Transmitter



Connect through FM to play sound through your car's audio system.

- 4.1 Adjust the car FM to a frequency that is not occupied by the broadcast, and adjust the device FM to the same frequency; for example, adjust the car FM to 91.0MHz (if not occupied), and then adjust the the FM frequency of the device to 91.0MHz, as well, and the FM function is turned on; after the connection is successful, the sound on the device will be transmitted to the car speakers.
- 4.2 When the FM is on, you can select the button or slide the pointer to adjust the frequency.



3.3 Android Auto

3.3.1 Android Auto Wireless Connection

Note

What you need:

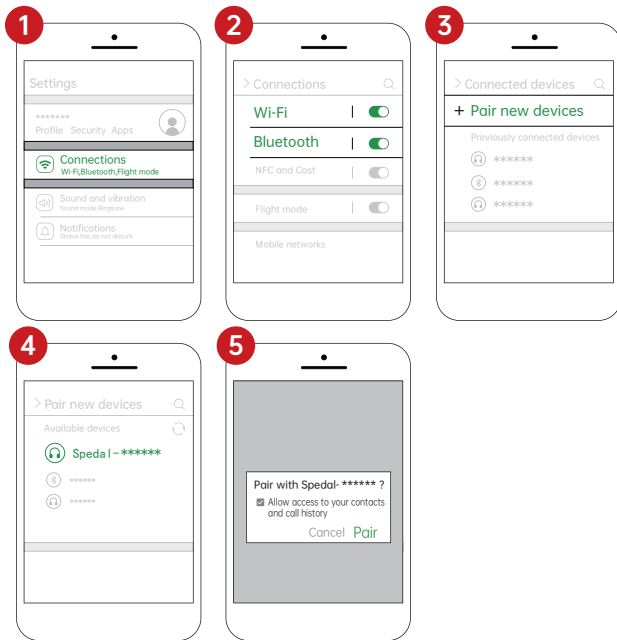
A compatible Android phone with an active data plan, 5 GHz Wi-Fi support, and the latest version of the Android Auto app. Wireless projection is compatible with these Android versions:

1. Any phone with Android 11.0.

2. A Google or Samsung phone with Android 10.0.

3. A Samsung Galaxy S8, Galaxy S8+, or Note 8, with Android 9.0.

1. Go to Settings on your phone, turn on "Bluetooth" and "Wi-Fi".
2. Click on "Bluetooth" to enter the Bluetooth search page.
3. After entering the "Bluetooth" menu, click "Pair new devices" to search for new Bluetooth devices.
4. Select the Bluetooth device starting with "Spedal-*****" from the list of "Other DEVICES" Bluetooth devices.
5. Wait for about 20 seconds, a prompt box will pop up on the phone with "Pair with Spedal-*****", click "Pair" (as shown below), and wait for the Bluetooth pairing to complete. After the Android Auto connection is completed, it will automatically enter the Android Auto mode.



Note

Different models of Android phones may display differently, please refer to the actual situation.

The first connection takes a longer time, please be patient.

If you want to switch to CarPlay/AirPlay/Miracast, you need to turn off Bluetooth and WIFI on your phone and disconnect from Android Auto connection mode.

3.3.2 Andorid Auto Audio Out

Click "🎵" on the home screen to enter the Audio Out.

1. Native Audio



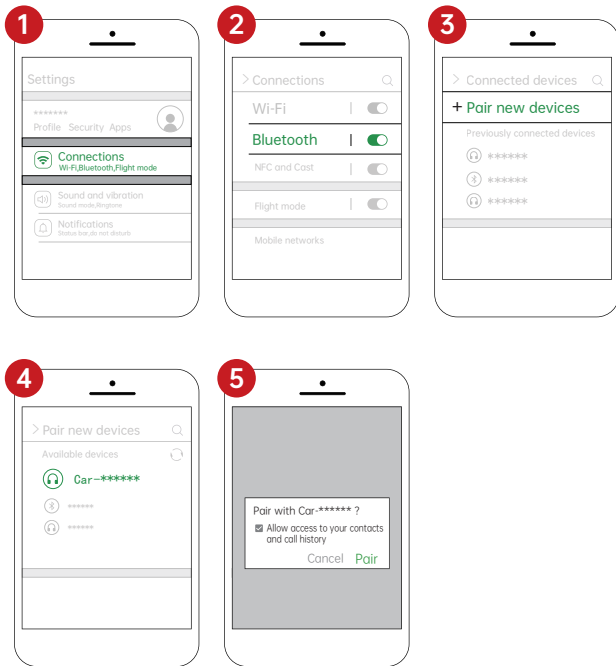
The sound is played from the speaker of the device.

2. Bluetooth



In CarPlay/Android Auto mode, the phone is directly connected to the car's Bluetooth (if the phone has been paired with the car's Bluetooth before, there is no need to repeat the connection operation).

- 2.1 Go to Settings on your phone > Bluetooth, turn on the "Bluetooth".
- 2.2 Enter Bluetooth search page.
- 2.3 Click "Pair new devices" to search new Bluetooth device.
- 2.4 Select your car's Bluetooth name pairing from the list of searched Bluetooth.
- 2.5 Wait for about 20 seconds, the phone pops up the box "Pair with "Car-*****", click "Pair", wait for the Bluetooth pairing to finish. The audio will be played from the car.



Note

1. Due to differences in Android phone models, the display may vary. Refer to your specific device for accuracy.
2. The initial connection time might be relatively long, please be patient.

3. AUX Connection



The same as the page 07--3.2.2--3.Aux Connection.

4. FM Transmitter

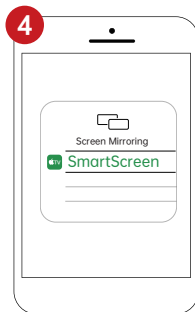
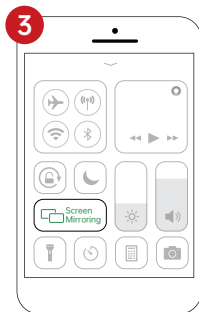
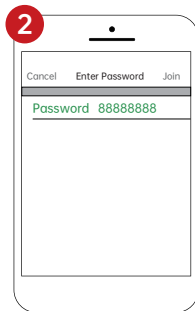
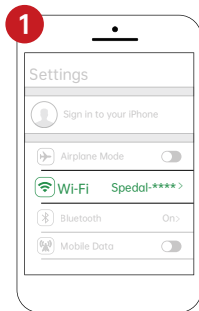


The same as the page 07--3.2.2--4.FM Transmitter.


3.4 Apple AirPlay

Apple AirPlay Wireless Connect

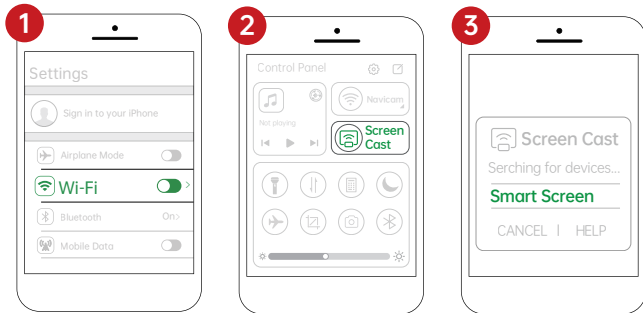
1. Go to Settings on your iPhone > Wi-Fi
2. Select the Wi-Fi network with the name starting with "Spedal-****" and connect to it. Enter the password, the default password is "88888888".
3. Swipe down from the top of the iPhone screen to access the Control Center menu, then tap "Screen Mirroring".
4. Click on "SmartScreen" to complete Screen Mirroring.



3.5 Miracast

Click "  " on the home screen to enter the Miracast.

1. Go to Settings on your phone, turn on "Wi-Fi".
2. Swipe down from the top of the phone screen to access the Control Center menu, then tap "Screen Cast".
3. Wait for your phone to search for wireless casting devices. Tap on the device name from the search list, and wait a few seconds for the casting to be completed.

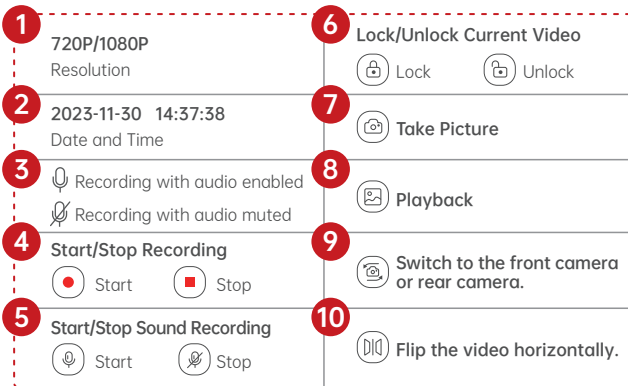
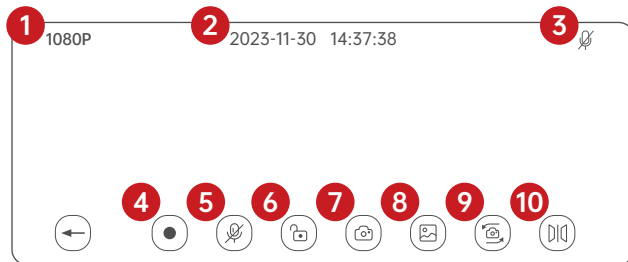


Note

1. Due to differences in Android phone models, the display may vary. Refer to your specific device for accuracy.
2. The initial connection time might be relatively long, please be patient.

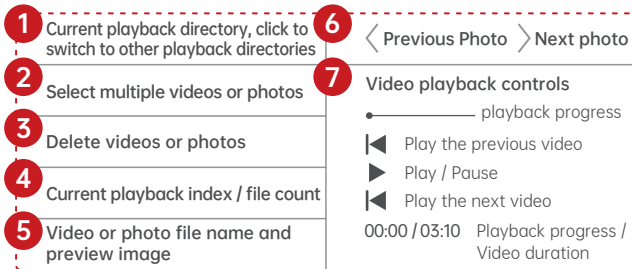
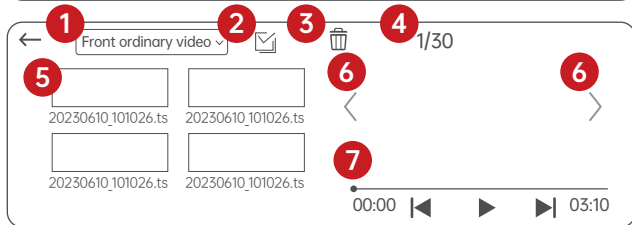
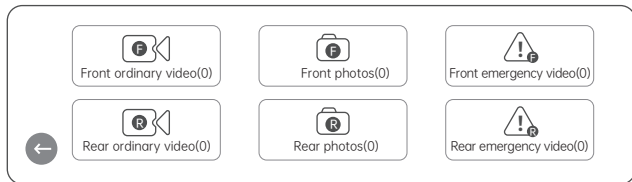
3.6 DVR

Click on the DVR preview area located on the left side of the main screen to enter DVR mode.




3.7 Playback


First enter the DVR mode, then click "" enter playback mode.





3.8 Settings


Click "" on the home screen to enter the Settings mode.


3.8.1 Settings


 **System Settings**
Toggle or adjust settings for streaming media, screen mirroring, screen sleep, language, time, driving habits, and more.


 **Video Settings**
Set video resolution, recording duration, format encoding, collision sensitivity, preview mirroring, and audio settings.

 **Brightness**
Adjust brightness.

 **Audio**
Adjust device volume, enable or disable key sounds, and enable or disable power on/off music.

 **App download**
Scan the QR code displayed on the prompt box with your phone to download the RoadCam App.

 **Format**
Delete all data on the TF card. This operation is irreversible, please back up the images or photos before performing this operation.

 **Factory reset**
Restore all settings to the factory default values.

 **About**
View the current firmware version information of the host.

3.8.2 System Settings



Streaming Media

Enable or disable streaming media.



Screen sleep

Adjust the screen sleep time or enable/disable sleep mode.



Language

Set the language displayed by the system. English, 日本語, Русский язык, Français, Polski, Español, ViệtName, Português, עברית, العربية, 한국어, Deutsch can be selected.



Projection mode(Full screen mode/split screen mode)

Switch between full screen mode or split screen mode between screen mirrors.



Storage status

Check the remaining storage space of the TF car.



Time setting

Set the date and time of the device.



Driving habit selection

Choose left-hand driving or right-hand driving.

3.8.3 Video Settings



Record resolution

Set the resolution of the video.



Coding format

You can choose H.264 or H.265 encoding.



Hor preview mirror

Enable video recording with audio or disable video recording with audio.



Video duration

Set the video duration to 60 seconds,120 seconds, or 300 seconds.



Collision sensitivity

Adjust the collision sensitivity to high or low.



Sound recording

Turn on or off sound recording.



more product information
www.spedal.cc



more product videos
youtube search [pedal](#)

- EN Download manuals of other languages from our homepage.
- DE Laden Sie Handbücher in anderen Sprachen von unserer Homepage herunter.
- FR Téléchargez des manuels dans d'autres langues depuis notre page d'accueil.
- ES Descargue manuales en otros idiomas desde nuestra página de inicio.
- IT Scarica manuali in altre lingue dalla nostra homepage.

USA Customer Service Hotline: [+1\(463\)207-9998](tel:+14632079998)

For any questions please contact support@spedaltech.com